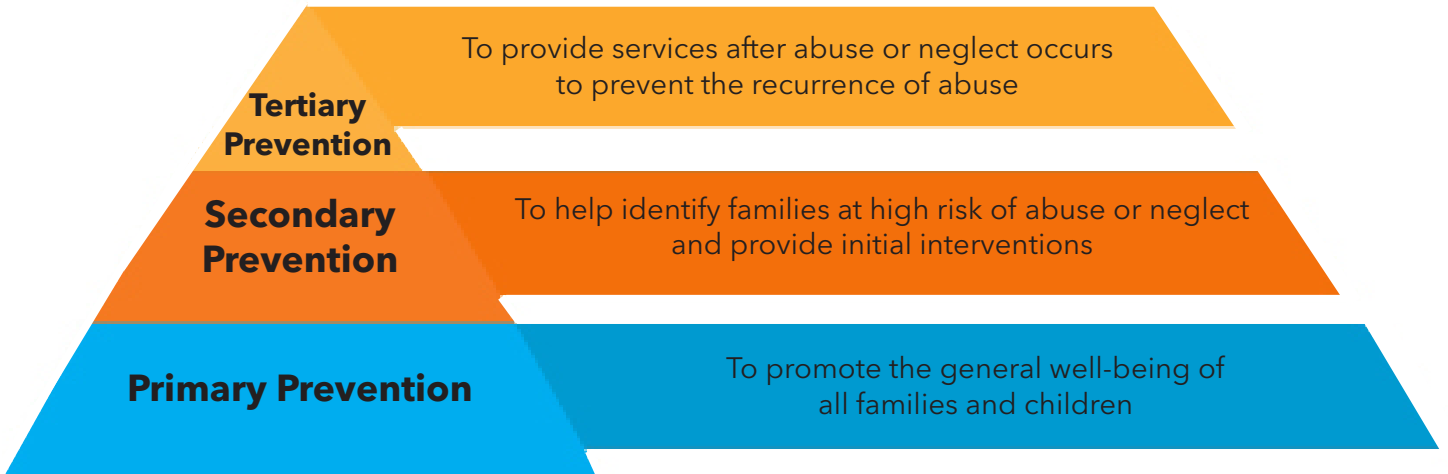


# State Agency Programs That Protect Child Well-being and Safety

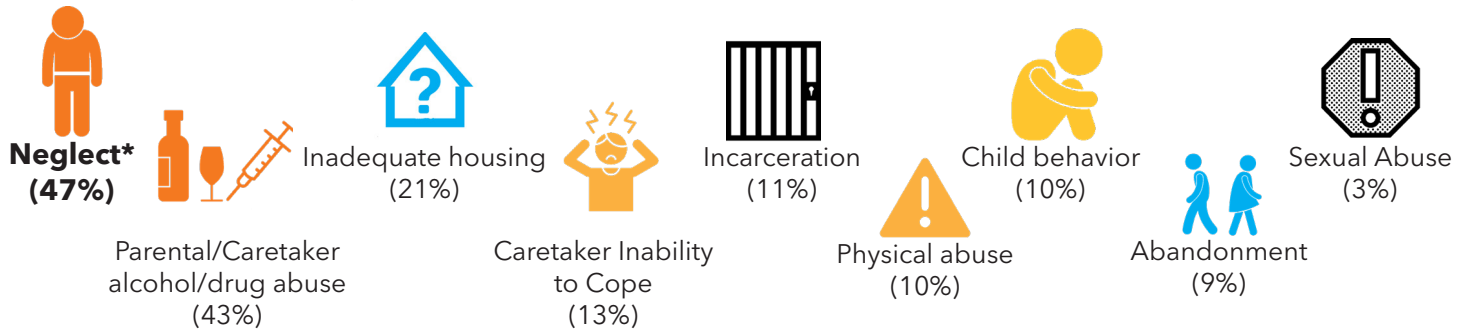
Preventing a child’s removal from the home requires a **comprehensive approach** that targets multiple layers of a child’s surroundings and engages **multiple state agencies**.<sup>1</sup>



The above pyramid was adapted from the [Prevent Child Abuse \(PCA\) Georgia Prevention Model](#). PCA Georgia, housed within Georgia State University’s School of Public Health, is part of a national network and has more than 20 local councils throughout the state which advocate and implement research-based prevention practices in their communities.

## Reasons a Child is Removed from Home

A child is removed from his or her home and placed in foster care for a variety of reasons, and often for more than one reason, including (but not limited to):<sup>2</sup>



\*Neglect is defined as failure to provide adequate food, shelter, clothing, medical care, education, or supervision, or failure to meet emotional or psychological needs (GA Code § 15-11-2 [2018])

## Mandated Reporters of Child Abuse

Most state agencies have employees or service contracts with people that are mandated reporters. For certain sectors, mandated reporter training is made available. [Georgia Code](#) (O.C.G.A § 19-7-5) states that the following positions are mandated reporters of child abuse, and thus play a vital role in protecting children: physicians; hospital or medical personnel; dentists; registered professional nurses or licensed practical nurses; professional and school guidance counselors, social workers, or marriage and family therapists; school teachers and administrators; school social workers and psychologists; child welfare agency personnel; law enforcement personnel; and more.

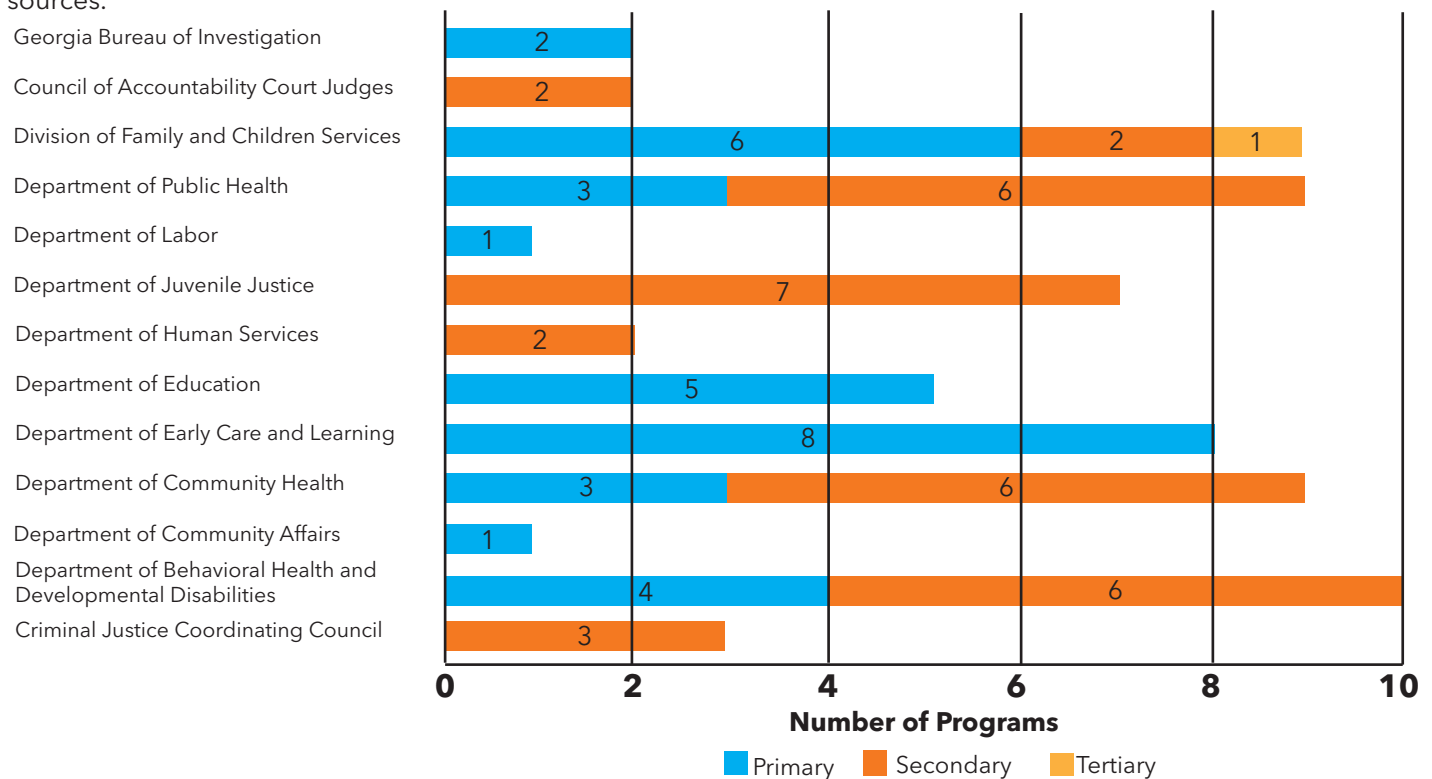
## Georgia's Strategies to Prevent Child Abuse and Neglect

The state's child abuse and neglect prevention plan, "[A Vision for Child Well-being in Georgia](#)," outlines specific collective objectives designed to support children and families, prevent child abuse and neglect, and strategies to do so. These include:

| Objectives  | Examples of Strategies to Achieve Objectives   |
|---|--|
| Increase family economic stability  | <ul style="list-style-type: none"> <li>Expand access to safe, affordable housing</li> <li>Expand access to secondary education and non-traditional programs, like technical colleges</li> </ul>  |
| Increase family resiliency  | <ul style="list-style-type: none"> <li>Expand access to evidence-based afterschool and summer programs</li> <li>Increase access to evidence-based parenting skills support</li> </ul>  |
| Increase access to early childhood care and education   | <ul style="list-style-type: none"> <li>Expand access to childcare, incentivizing childcare business in underserved areas and expanding Childcare and Parent Services</li> </ul>  |
| Increase family mental health   | <ul style="list-style-type: none"> <li>Expand accountability courts with an emphasis on access to behavioral health treatment for all families</li> <li>Increase access to community-based behavioral health services for low-income families</li> </ul>                                 |
| Increase family physical health   | <ul style="list-style-type: none"> <li>Expand access to affordable health insurance coverage for all Georgians</li> <li>Promote evidence-based sexual health education and pregnancy prevention for youth</li> </ul>   |
| Increase community knowledge and awareness of the societal factors that contribute to child abuse and neglect | <ul style="list-style-type: none"> <li>Ensure medical professionals are educated on recognizing child abuse and trauma-informed care</li> <li>Expand local collaborations and advocacy across sectors, including government, non-profits, faith organizations, and businesses</li> </ul> |

### Prevention By the Numbers\*\*

Below is a snapshot of state agency programs that provide primary, secondary, and/or tertiary prevention, with each program tagged with the base prevention level.\*\*\* These are funded through a combination of federal, state, and local sources.



\*\*This is not an exhaustive list of state agency programs that support child well-being.

\*\*\*Some of these programs may serve to prevent child abuse and neglect on multiple tiers; we have categorized each as the base level tier for the purposes of the visual.

Rev. 12/2020

Sources available here: <https://tinyurl.com/ChildProtectionAgencies>

## State Agencies That Protect Child Well-being

We list 67 state agency programs below that **provide concrete support** to families, that **prevent child abuse and neglect**, and promote protective factors for child wellbeing.

| State Agency   | Program  | Prevention Level | How It's Paid For<br>(i.e. federal or state funds) |
|--|--|------------------|--|
| Division of Family and Children Services                       | <b>SNAP/Food Stamps</b> assists families with the cost of food.  | Primary          | Federal  |
|  | <b>Temporary Assistance for Needed Families (TANF)</b> provides cash assistance to families with dependent children.   | Primary          | Federal  |
|  | <b>Personal Responsibility and Education Program</b> provides sex education and teen pregnancy prevention, financial literacy, educational and career preparation.   | Primary          | Federal  |
|  | <b>Prevention and Community Support Section (PCS)</b> works within the Division and in partnership with community-based organizations to reduce child abuse and neglect. Using state and federal funding streams, PCS supports the use of evidence-based and evidence-informed practices and programs to improve outcomes for children and families.   | Primary          | State and Federal                                  |
|  | <b>Refugee Program</b> provides individuals and families access to services that promote self-sufficiency, independence and protect Georgia's vulnerable children and adults. Services for refugees are coordinated with the private sector, and include job development, placement and specialized training opportunities, as well as contracted support service activities.  | Primary          | Federal  |
|  | <b>State of Hope</b> cultivates family-centered support systems by connecting, equipping and nurturing diverse community collaborators. It encourages nonprofits, philanthropies, government, businesses and communities to collaborate closely to build local safety nets that will prevent conditions that contribute to disparities in education, threaten a family's self-sufficiency and could lead to child abuse and neglect. | Primary          | State and Local                                    |
|  | <b>Promoting Safe and Stable Families</b> supports building capacity in community-based organizations to ensure children and their families have access to comprehensive, high quality prevention and intervention services within four categories: family support, family preservation, family reunification, and adoption promotion.   | Secondary        | Federal  |
|  | <b>After-school Care Program</b> provides grants to support high-quality youth development programming for out-of-school time.   | Secondary        | Federal  |
|  | <b>Child Abuse and Neglect Services and Foster Care</b> protect children from dangerous situations, intervenes with families to support parenting and family well-being, investigates allegations of child abuse and provides for safe alternate settings when a removal from the home is necessary.   | Tertiary         | State and Federal                                  |
| Department of Behavioral Health and Developmental Disabilities | <b>Mental and Behavioral Health Services</b> involves support like medication administration, case management, peer supports, individual, family or group counseling, skill building, and housing support to individuals with a mental illness and/or co-occurring substance use disorder.   | Primary          | State and Federal                                  |
|  | <b>Georgia Housing Voucher and Bridge Program</b> (or Supportive Housing) assists individuals in securing safe and affordable housing, and integrates access to community-based services.  | Primary          | State  |
|  | <b>Youth Peer Drop-In Centers</b> provide life skill-building supports for young adults, ages 16-26.   | Primary          | State and Federal                                  |
|  | <b>Georgia Apex Program</b> increases access to mental health services for school-aged youth, Pre-K to 12th grade, throughout the state.   | Primary          | State  |
|  | <b>High Fidelity Wraparound</b> provides alternative supports to prevent youth (5-17) and young adults (18-21) from entering or re-entering a psychiatric residential treatment facility.  | Secondary        | State and Federal                                  |
|  | <b>Community Support Teams</b> provide community-based support (e.g.,  | Secondary        | State  |

| State Agency  | Program   | Prevention Level | How It's Paid For<br>(i.e. federal or state funds) |
|---|---|------------------|--|
| Department of Behavioral Health and Developmental Disabilities, continued | community living skills, psychiatric and co-occurring disease management) for individuals who have a history of incarceration or hospitalization.   | Secondary        | State  |
|   | <b>Intensive Case Management/Case Management</b> utilizes a community-based team approach that supports individuals in their journey of recovery through care coordination for physical and behavioral health needs, and engagement in activities that build social and life skills.  | Secondary        | State  |
|   | <b>Resiliency Support Clubhouses</b> support youth in coping with mental health disorders and/or preventing substance use through educational supports, employment services, peer support, family engagement, and activities that build decision-making and life skills.  | Secondary        | State  |
| Department of Community Health  | <b>Planning for Healthy Babies</b> provides no-cost family planning services to women who meet certain income limits. Services include annual physical exams, contraceptives, substance abuse treatment, and inter-pregnancy care.  | Primary          | State and Federal                                  |
|   | <b>Medicaid/PeachCare/Georgia Families 360 health care coverage</b> , including mental health and substance use disorder services, parental skill-building, and high fidelity wraparound (known as intensive customized care coordination, or IC-3).  | Primary          | State and Federal                                  |
|   | <b>TEFRA/Katie Beckett Waiver Program</b> (also known as the Deeming Waiver) provides Medicaid benefits to children with disabilities otherwise ineligible because of family income.  | Primary          | State and Federal                                  |
|   | <b>Autism Spectrum Disorder services coverage</b> provides behavior identification assessments, adaptive behavior treatments, and family adaptive behavior treatments, among other services.  | Secondary        | State and Federal                                  |
|   | <b>Children's Intervention School Services</b> provides reimbursement for medically necessary services that are delivered in schools and provided by or arranged by a local education authority for Medicaid-eligible students with an Individualized Education Program.  | Secondary        | State and Federal                                  |
|   | <b>Children's Intervention Service Program</b> offers coverage for restorative and/or rehabilitative services to eligible members in non-institutional settings such as home or community practice settings. Services include nursing, therapies, and nutrition.  | Secondary        | State and Federal                                  |
|   | <b>Early Intervention Case Management</b> includes coordination activities on behalf of children with significant delay in one or more of the following five areas: cognitive development; physical development, including vision and hearing; communication development; social or emotional development; or adaptive development; or have an established risk of developmental delay.                     | Secondary        | State and Federal                                  |
|   | <b>Early and Periodic Screening, Diagnostic, and Treatment (EPSDT) Health Check Program</b> provides reimbursement for preventive health services, interperiodic visits, developmental screenings, brief emotional/behavioral assessments, hearing and vision screenings, and immunizations in accordance with the American Academy of Pediatrics Bright Futures recommendations for children under age 21. | Secondary        | State and Federal                                  |
|   | <b>Georgia Pediatric Program</b> provides at-home nursing care and personal care to medically fragile children.   | Secondary        | State and Federal                                  |
| Department of Education   | <b>Positive Behavioral Interventions and Supports</b> is an evidence-based data-driven framework that aids in reducing disciplinary incidents and improving school climate.   | Primary          | State and Federal                                  |
|   | <b>Georgia's Tiered System of Supports for Students</b> includes evidence-based interventions and screenings that will provide the different levels of support needed to maximize student achievement and reduce behavior problems.   | Primary          | Federal  |

| State Agency                          | Program  | Prevention Level | How It's Paid For<br>(i.e. federal or state funds) |
|---------------------------------------|--|------------------|--|
| Department of Education, continued    | <b>Migrant Education Program</b> ensures that migrant children receive support that address any unmet educational needs that are a result from repeated moves.   | Primary          | Federal  |
|                                       | <b>Wraparound Services Coordination</b> created and funds 16 regional half-time coordinator positions* to assist school leaders in leveraging community assets to provide needed services within schools.  | Primary          | Federal  |
|                                       | <b>Nita M. Lowey 21st Century Community Learning Centers</b> provide federal funds to establish or expand community learning center activities that operate during out-of-school hours.  | Primary          | Federal  |
| Department of Public Health           | <b>Women, Infants, and Children (WIC)</b> supports mothers' and children's access to healthy foods, promotes and supports breastfeeding, and provides nutrition education and health screenings.   | Primary          | Federal  |
|                                       | <b>Children 1st</b> collaborates with providers, schools, and families to identify children age 0-5 at risk of poor health outcomes or developmental delays and links them to early intervention services.   | Primary          | State and Federal                                  |
|                                       | <b>Oral Health Program</b> provides dental services and education for children.  | Primary          | State/Federal                                      |
|                                       | <b>Babies Can't Wait</b> provides early intervention services to babies age 0-3 who have developmental delays.   | Secondary        | State and Federal                                  |
|                                       | <b>Home Visiting Program</b> is an evidence-based, family-centered support strategy to give new mothers and at-risk children age 0-5 the resources and skills they need to support child and family well-being.  | Secondary        | State and Federal                                  |
|                                       | <b>Georgia Autism Initiative</b> provides statewide coordination of service delivery for children age 0-21 and their families for early intervention, family coaching and support, transition planning, and provider training.   | Secondary        | State and Federal                                  |
|                                       | <b>Children's Medical Services</b> works with providers and community partners to support families caring for children with special health care needs.   | Secondary        | State and Federal                                  |
|                                       | <b>Georgia Newborn Screening</b> provides identification and early intervention for select inherited disorders that can have serious or fatal outcomes.  | Secondary        | State and Federal                                  |
| Department of Juvenile Justice        | <b>Behavioral Health Services</b> in detention settings provides access to behavioral health treatment and supports for youth in secure facilities.  | Secondary        | State and Federal                                  |
|                                       | <b>Georgia Preparatory Academy</b> is Georgia's 181st school district, which provides middle and high school education for youth in secure facilities.   | Secondary        | State and Federal                                  |
|                                       | <b>Pathways to Success</b> is an adult education program offering GED instruction and testing.   | Secondary        | State  |
|                                       | <b>Connections Graduate Program</b> supports re-entry, work skills development, and post-secondary options for youth in secure facilities.   | Secondary        | State  |
|                                       | <b>Community Service Grant</b> reduces the number of out-of-home placements of youth, and provides evidence-based programs/therapies.  | Secondary        | State  |
|                                       | <b>Georgia Preparatory Academy Parent and Family Engagement Program</b> leverages two federal programs (Title I-A and Title I-D) and parent mentors to encourage parents to partner with DJJ schools to increase student academic achievement with their children during visitation. | Secondary        | Federal  |
|                                       | <b>Parenthood Project</b> is a multi-organization partnership that provides parenting skills training and toys/books to support DJJ youth who are parents in having meaningful interactions with their children during visitation.   | Secondary        | State  |
| Criminal Justice Coordinating Council | <b>Juvenile Justice Incentive Grant</b> reduces the number of out-of-home placements of youth and provides evidence-based programs/therapies.  | Secondary        | State and Federal                                  |

| State Agency   | Program  | Prevention Level | How It's Paid For<br>(i.e. federal or state funds) |
|--|--|------------------|--|
| Criminal Justice Coordinating Council, continued   | <b>Family Violence Prevention and Services</b> provides funding to support efforts designed to increase awareness about family, domestic and dating violence, and to provide supports and services to victims and their children.  | Secondary        | Federal  |
|  | <b>Child in Need of Services, or CHINS</b> , is a program established by O.C.G.A. 15-11-2 for children who are truant from school, run away from home, committed an offense only applicable to a child (e.g., driving past curfew), or certain other criteria. A "CHINS" child may never be held in adult detention and must always be placed in the least restrictive placement (e.g., parent custody, DFCS, secure juvenile custody).  | Secondary        | State and Local                                    |
| Georgia Bureau of Investigation  | <b>Child Fatality Review Panel</b> oversees the child fatality review process and reporting, including tracking the incidence of child deaths and recommending data-informed preventative measures.  | Primary          | State  |
|  | <b>Georgia Internet Crimes Against Children Task Force</b> , housed within the GBI Child Exploitation and Computer Crimes Unit, assists state and local law enforcement agencies in developing an effective response to cyber enticement, child pornography, and the commercial sexual exploitation of children. Special Agents assigned to this unit conduct proactive and reactive investigations involving the sexual exploitation of children and attempt to locate and rescue juvenile victims of commercial sexual exploitation. | Primary          | State and Federal                                  |
| Council of Accountability Court Judges   | <b>Juvenile Accountability Courts (Juvenile Drug Court and Juvenile Mental Health Court)</b> divert youth from incarceration and improve long-term outcomes by offering alternatives such as treatment, court supervision, and family or community linkages.   | Secondary        | State  |
|  | <b>Adult Accountability Courts (Drug Court, DUI Court, Mental Health Court, Family Treatment Court, Veterans Court)</b> divert parents/caregivers/influential adults in a child's life from incarceration, and provide support that addresses the individual's needs, including comprehensive behavioral and substance abuse treatment, and family support services.   | Secondary        | State  |
| Department of Early Care and Learning  | <b>Child and Family Development Program</b> provides resources and training related to child development and family engagement to early care and learning professionals and families.  | Primary          | Federal  |
|  | <b>Inclusion and Behavior Support Services</b> are conducted by regionally based specialists who provide families and early care and learning professionals with training, resources, strategies, and supports to ensure that children with disabilities are successfully included in early care and learning environments, and to support children with significant challenging behavior.   | Primary          | State and Federal                                  |
|  | <b>Pre-K/Quality Rated</b> supports families in finding and enrolling in high-quality child care, preschool, and pre-k programs.   | Primary          | State, Federal* and other grants                   |
|  | <b>SEEDS</b> is a collaborative that ensures that state initiatives related to social-emotional development are coordinated and properly aligned with the Pyramid Model for Supporting Social-Emotional Competence in Infants and Youth Children.  | Primary          | State  |
|  | <b>Childcare and Parent Services</b> assists families with the cost of child care.   | Primary          | Federal  |
|  | <b>Childcare Services</b> provides oversight, support, and guidance to the child care industry to ensure the health and safety of children through licensing and monitoring Child Care Learning Centers and Family Child Care Learning Homes throughout the state.   | Primary          | Federal  |
|  | <b>Child and Adult Care Food Program</b> ensures children have access to nutritious meals and snacks at participating locations.   | Primary          | Federal  |
| <b>Summer Food Service Program</b> provides children with healthy, nutritious meals in their communities while school is not in session. | Primary  | Federal          |  |

\*Federal grant is the Child Care Development Fund

| State Agency   | Program   | Prevention Level | How It's Paid For<br>(i.e. federal or state funds) |
|--|---|------------------|--|
| Department of Community Affairs<br>(and local housing authorities) | <b>Safe and Affordable Housing</b> supports low-income families' housing needs through different federally supported housing programs.  | Primary          | State and Federal                                  |
| Department of Human Services                                       | <b>Fatherhood Program</b> is designed to help the noncustodial parent achieve self-sufficiency and encourages both parents' involvement in all aspects of their children's lives.   | Secondary        | Federal  |
|  | <b>Parent Accountability Court</b> or PAC program is a joint effort of Georgia's Child Support Services and Superior Court Judges to offer an alternative to incarceration for chronic nonpayers of child support by providing judicial oversight and helping these parents overcome the barriers that impede their ability to make regular support payments. | Secondary        | Federal  |
| Department of Labor  | <b>Unemployment Insurance</b> temporarily supports families during economic hardship due to job loss.   | Primary          | State and Federal                                  |

## Sources for State Agency Programs that Protect Child Well-being and Safety

- 1 Georgia State University, Prevent Child Abuse Georgia. "Strengthening Families through Safe, Stable, Nurturing Relationships & Environments: What Does Prevention Look Like?" Retrieved on June 15, 2020 from <https://abuse.publichealth.gsu.edu/prevention-model/>.
- 2 Rawlings, T. Georgia Division of Family and Children Services. (2019.) Clayton County, Georgia: July 25, 2019 presentation.